

# *Now... Temps that stay on and don't break*

## Rubberized Provisional Resin

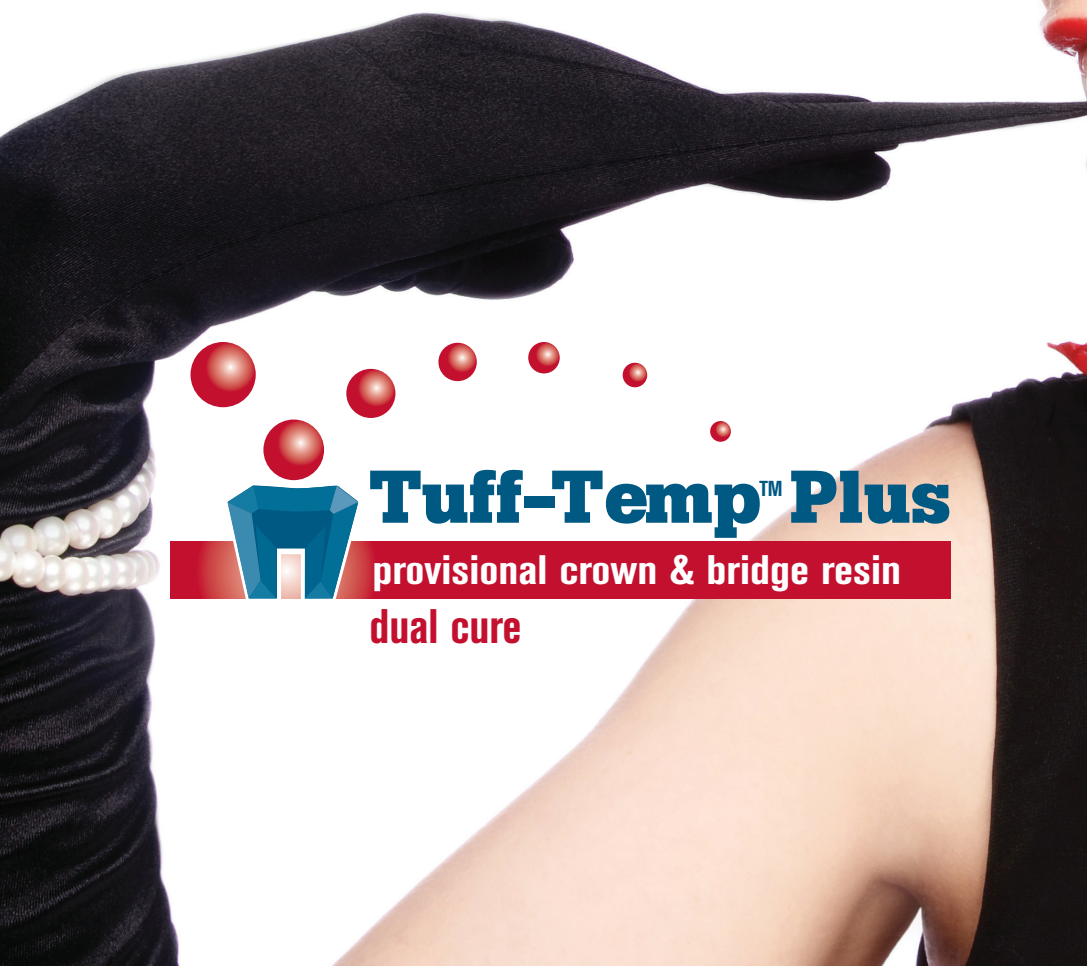
**Delivers the total package  
without stretching your budget**

- Durable
- Fracture resistant
- Esthetic
- Precision fit
- Includes Add-On and Glaze
- Kind to tissues
- Trims to crisp margins
- Does not gum up instruments
- Dual cure



**PULPDENT®**

[www.pulpdent.com](http://www.pulpdent.com)





# Tuff-Temp™ Plus

## provisional crown & bridge resin

### dual cure

#### Rubberized-Urethane™ - Dual Cure

Tuff-Temp Plus's advanced rubberized-urethane chemistry provides greater strength and dimensional stability, and tighter fitting provisional restorations, than acrylics and bis-acrylics. Breakage and debondings are minimized or eliminated.

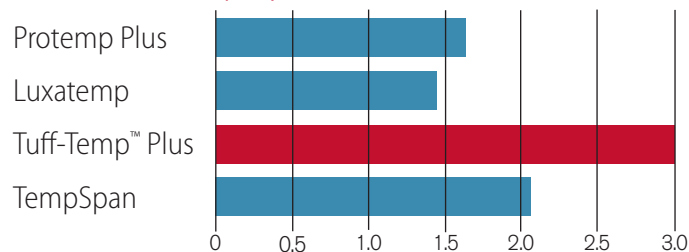
The material grinds and powders producing crisp and accurate margins that do not soften or distort. Finishing instruments do not gum up or clog. Trimming with a low speed acrylic bur, fine grit diamond bur or finishing and polishing disk system provides exceptional results.

Tuff-Temp Plus self-cures and has a light cure option to produce a full strength restoration on demand. Fast light curing is also ideally suited for use with a clear vinyl polysiloxane template.

#### Flexural Strength / Deflection at Break

Tuff-Temp Plus exhibits very high flexural strength without brittleness. Its far greater deflection at break, the key indicator of toughness, is approximately 50% to 100% greater than bis-acrylics.

##### Deflection at Break (mm)\*



\* Internal Pulpdent testing. Protemp, Luxatemp and ProSpan are trademarks of 3M ESPE, DMG and Pentron respectively.

#### Tuff-Temp™ Plus

##### Provisional Crown & Bridge Resin

50 mL cartridge + 20 automix tips,  
1.2 mL Add-On, 3 mL Glaze

TTPA1	A1 Shade
TTPA2	A2 Shade
TTPA3	A3 Shade
TTPA35	A3.5 Shade
TTPB1	B1 Shade
TTPB	Bleach Shade
FSB20	Mix tips for 50 mL, pkg. 20

5 mL syringe + 8 automix tips, 3 mL Glaze

TTP5A1	A1 Shade
TTP5A2	A2 Shade
TTP5A3	A3 Shade
TTP5A35	A3.5 Shade
TTP5B1	B1 Shade
TTP5B	Bleach Shade
A20	Mix tips for 5 mL, pkg. 20
A50	Mix tips for 5 mL, pkg. 50

##### Provisional Glaze

TTG	6 mL bottle
-----	-------------



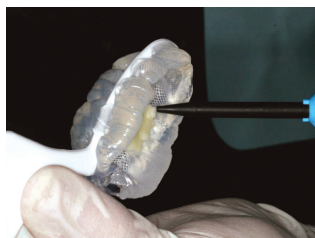
Tuff-Temp ratings



#### Tuff-Temp Plus 2-Unit Provisional



1. Crown preps have been completed on the premolar and molar.



2. Fill matrix  $\frac{3}{4}$  full with Tuff-Temp Plus and seat in the mouth. The time-saving, light cure option can be used with this clear template.



3. The 2-unit provisional is trimmed and glazed.



4. The finished Tuff-Temp Plus provisional. Finally, esthetic temporaries that stay on and don't break.

Photography courtesy of Dr. Christopher Ramsey

**PULPDENT®**

T (800) 343-4342 • T (617) 926-6666 • F (617) 926-6262 • [pulpdent@pulpdent.com](mailto:pulpdent@pulpdent.com)

[www.pulpdent.com](http://www.pulpdent.com)

**PULPDENT Corporation** • 80 Oakland Street • Watertown, MA 02472 • USA